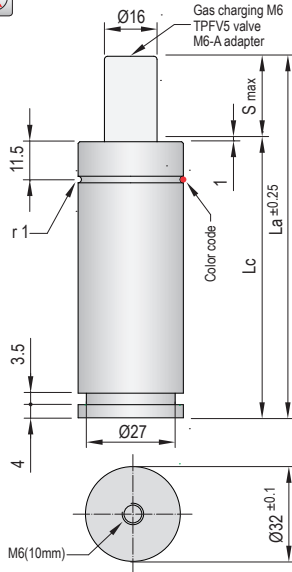




VDI SAFETY

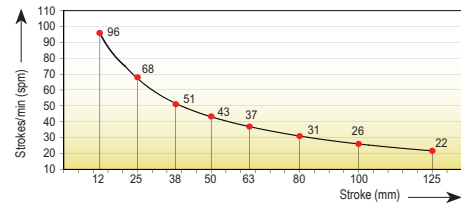


i Pressure medium **Nitrogen (N₂)**

Max. charging pressure	150 Bar
Min. charging pressure	25 Bar
Rod seal area	2,01 cm ²
Operating temperature	0°C - 80°C
Force increase by temperature	0,33 %/°C
Max. stem speed	1,6 m/s
Maintenance kit	Kit G32.1



Maximum strokes / minute (at 20°C)

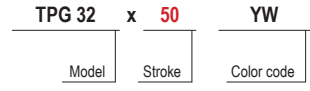


Code	Smax mm	La mm	Lc mm	V l	kg
TPG 32x12	12	84	72	0,007	0,35
TPG 32x25	25	110	85	0,015	0,36
TPG 32x38	38	136	98	0,023	0,40
TPG 32x50	50	160	110	0,030	0,47
TPG 32x63	63	186	123	0,038	0,48
TPG 32x80	80	220	140	0,049	0,56
TPG 32x100	100	260	160	0,061	0,64
TPG 32x125	125	310	185	0,076	0,74

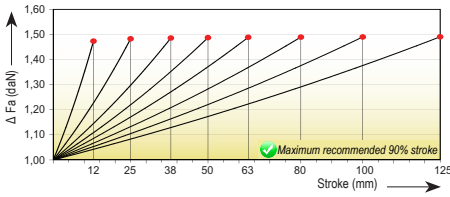
Color code	Fa daN	90% F daN	P Bar
GR (Green)	100 (±10)	≈ 145	50
BL (Blue)	200 (±15)	≈ 285	100
RD (Red)	250 (±20)	≈ 360	125
YW (Yellow)	300 (±20)	≈ 430	150
(Other forces)	50 - 300	≈ 75 - 430	25 - 150

The black color code denotes a different pressure from that which the customer could choose when ordering between the minimum charging pressure and the maximum charging pressure. If not otherwise specified, the gas spring will be supplied in the yellow code version (YW).

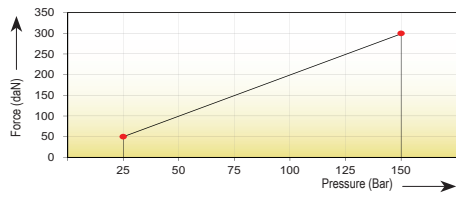
How to order



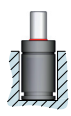
Force/stroke ratio



Initial force/charging pressure ratio



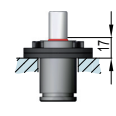
Assembly possibilities



DROP-IN



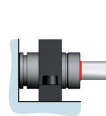
SCREWS



FS 32-FSC 32/1



FP 32-FPR 32



FI 32-FI 32/1

- TPA
- TPG
- TPCT
- TPSL
- STOP CYLINDER
- STOP CYLINDER
- TPSR
- TPSR5
- TPNS
- TPHT
-
-
-
-
-
-
-
-